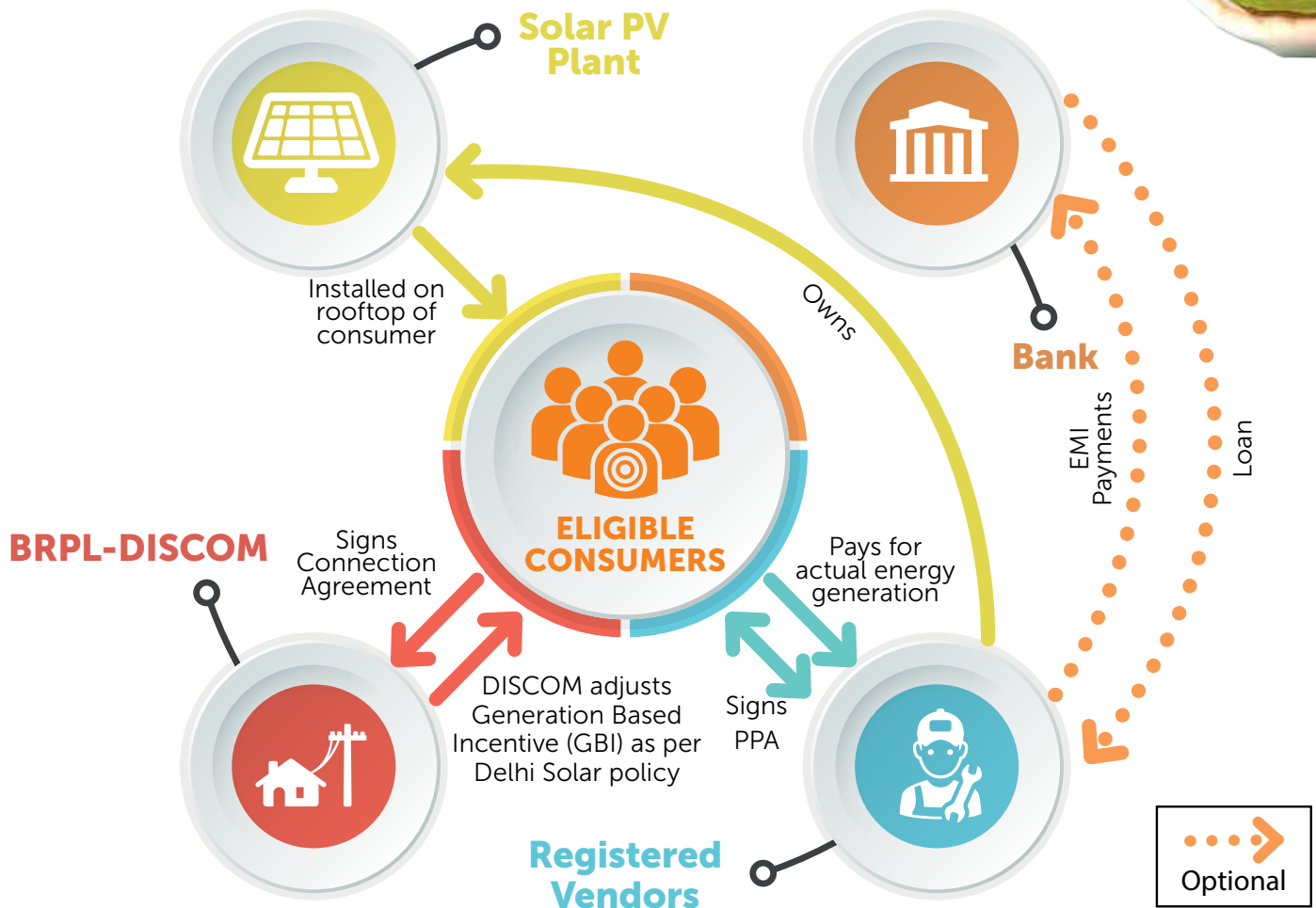


# RESCO/OPEX



- Vendor installs the plant on eligible consumer rooftop and retains the ownership of the plant
- Eligible Consumer signs long-term (25 years) Power Purchase Agreement (PPA) with vendor at identified price (with registered vendor)
- Eligible consumer signs a connection agreement with BRPL
- Eligible Consumer and vendor finalizes a payment security mechanism usually in form of a Bank Guarantee equivalent to three months of power generation cost from consumer.
- Vendor bears responsibility for Operation and Maintenance of the system
- Eligible consumer can terminate the contract at any point by paying settlement charges

## HelpDesk

Please feel free to reach out to us in case of any queries. We will try our best to solve the issues swiftly.

Email : [netmetering.brpl@relianceada.com](mailto:netmetering.brpl@relianceada.com)

Phone : +91 11 3999 9707 (Ext: 9)

Website : [www.solarbSES.com](http://www.solarbSES.com)

**Download the Solar BSES App now**